



*All roads  
lead to home*

## **Community Needs Assessment 2020**



## Introduction

This year's Community Needs Assessment survey is the result of input from a wide range of individuals and groups to Crossroads Youth & Family Services for the purpose of analyzing and improving the services that are offered by the organization. This resulting report also provides an opportunity for the public to receive statistical data on issues that directly affect children, parents and families in Crossroads' service area. Survey results are also used to update the five-year Head Start/Early Head Start Plan and to develop the Strategic Organizational Plan.

Respondents consisted of parents, Crossroads' staff, public school educators, members of the judiciary and district attorneys' offices, staff of Crossroads' funding agencies, and other community partners and leaders throughout Cleveland, Comanche, Pottawatomie and Seminole Counties. The survey featured questions about the Head Start/Early Head Start program and the Youth Services program, because both facets of the agency work very closely together.

According to the most recent copy of the Annie E. Casey Foundation's KID COUNT Data Book, Oklahoma's child population grew by 14% between 1990-1997, which is just under the national average of 15%. Sadly, Oklahoma's rank on the Foundation's overall index of child well-being remains at 42%, which has been typical of the state's position. The lowest two of the four indicators that made up this rank, Economic Well-being, Education, Health, and Family/Community, were Education (45%) and Health (43%). Interestingly, Economic Well-Being was highest at 35%.

Included in the Education category were the four indicators of Young Children Not in School, Fourth-Graders Not Proficient in Reading, Eighth-Graders Not Proficient in Math, and High School Students Not Graduating on Time.

In terms of population numbers, the following counties in Crossroads' service area are ranked in terms of population of children under age eighteen, from highest to lowest (18):

Seminole	25%
Pottawatomie	25%
Comanche	24%
Cleveland	22%

These four counties are identically ranked in terms of the percentage of the child population in poverty:

Seminole	33%
Pottawatomie.	25%
Comanche	23%
Cleveland	13%

Services offered through public schools are considered when considering need for additional services. The following section deals with Availability of Publicly-Funded Pre-Kindergarten and their relationship to Head Start/Early Head Start, as well as what kind of care is needed by actual or potential clients in the Head Start/Early Head Start Program.

**Head Start/Early Head Start**

Crossroads' Head Start/Early Head Start (HS/EHS) Program centers are located in the following geographic areas: Cleveland County (HS and EHS), Comanche County (HS and EHS), Pottawatomie County (HS and EHS), and Seminole County (EHS only). Towns and cities in which HS and/or EHS are offered include Norman, Moore, Noble, Lawton, Shawnee, Maud, Tecumseh, and Seminole.

<p style="text-align: center;">AVAILABILITY OF PUBLICLY-FUNDED PRE-KINDERGARTEN</p>
---

All school districts in the Crossroads service area were contacted via telephone to determine the availability of publicly-funded Pre-K classes, how the Pre-K programs meet the needs of parents and children served, and whether they are offered full-day or part-day in length. The following results provide a brief overview of the status of Pre-K in the school districts that Crossroads YFS serves.

**Cleveland County School Districts: Norman Area**

1. Do you offer Pre-K? *Yes*
2. Do you plan to increase availability of your Pre-K program? *Yes*
3. Is this an increase from two years ago? *Yes*
4. Currently, how many children are served? *500 full-day (6+ hours), 360 half-day (3-4 hours)*
5. Are you able to serve all four-year-old children in your area? *Yes*
6. Do you have a waiting list? *For full-day, but not for half-day*
7. What is your estimate of how many children under age 5 have younger siblings? *Unknown*
8. How do you select the children who participate in your pre-K program? *Drawing process, then open enrollment.*
9. Do you collaborate with other entities? *Head Start Programs, and other community agencies (YMCA, CCFI, CASP, etc.)*
10. Does your community need Head Start or Early Head Start slots? *Yes. Definitely Early Head Start.*
11. Are you aware of Crossroads HS/EHS? *Yes*

**Cleveland County School Districts: Moore**

1. Do you offer Pre-K? *Yes*
2. Do you plan to increase availability of your Pre-K program? *No*
3. Is this an increase from two years ago? *Yes*
4. Currently, how many children are served? *841 Part-Day (4 hours)*
5. Are you able to serve all four-year-old children in your area? *Yes*
6. Do you have a waiting list? *No*
7. What is your estimate of how many children under age 5 have siblings? *420*
8. How do you select the children who participate in your pre-K program? *On-site enrollment*
9. Do you collaborate with other entities? *No*
10. Does your community need Head Start or Early Head Start slots? *No*
11. Are you aware of Crossroads HS/EHS? *Yes*

**Cleveland County School Districts: Robin Hill, Noble, Lexington, Little Axe**

1. Do you offer Pre-K?  
Robin Hill- *Yes*  
Noble- *Yes*  
Lexington- *Yes (left voicemail)*  
Little Axe- *Yes*
2. Do you plan to increase availability of your Pre-K program?  
Robin Hill- *Yes*  
Noble- *Yes*  
Lexington- *(no response)*  
Little Axe- *Yes*
3. Is this an increase from 2 years ago?  
Robin Hill- *Yes*  
Noble- *Yes*  
Lexington- *(no response)*  
Little Axe- *Yes*
4. Currently, how many children are served?  
Robin Hill- *58 full-day (6+ hours)*  
Noble- *150 full-day (6+ hours)*  
Lexington- *(no response)*  
Little Axe- *80 full-day (6+ hours)*
5. Are you able to serve all four-year-old children in your area?  
Robin Hill- *Yes*  
Noble- *Yes*  
Lexington-  
Little Axe- *No*
6. Do you have a waiting list?  
Robin Hill- *Yes, but it is made up of transfers.*  
Noble- *No*  
Lexington- *(no response)*  
Little Axe- *Yes*
7. What is your estimate of how many children under age 5 have siblings?  
Robin Hill- *45*  
Noble- *Unknown*  
Lexington- *(no response)*  
Little Axe- *Unknown*
8. How do you select the children who participate in your pre-K program?  
Robin Hill- *On-site enrollment. In-district kids first, then order that they apply.*  
Noble- *On-site enrollment*

- Lexington- *(no response)*  
Little Axe- *On-site enrollment*
9. Do you collaborate with other entities?  
Robin Hill-*No*  
Noble- *Head Start for speech services*  
Lexington- *(no response)*  
Little Axe- *Just Crossroads Youth & Family Services.*
10. Does your community need more Head Start or Early Head Start slots?  
Robin Hill-*Yes*  
Noble- *Yes*  
Lexington- *(no response)*  
Little Axe- *Unknown*
1. Are you aware of Crossroads HS/EHS?  
Robin Hill- *Yes*  
Noble- *Yes*  
Lexington- *(no response)*  
Little Axe- *Yes*

### Comanche County School Districts

1. Do you offer Pre-K?  
Lawton-*Yes*  
*[Lawton Public Schools did not provide a response to the rest of the questions.]*

### Pottawatomie County School Districts

1. Do you offer Pre-K?  
Shawnee- *Yes*  
Maud- *Yes*  
Tecumseh- *Yes*
2. Do you plan to increase availability of your Pre-K program?  
Shawnee- *No*  
Maud- *No*  
Tecumseh- *No*
3. Is this an increase from 2 years ago?  
Shawnee- *No*  
Maud -*Yes*  
Tecumseh- *Yes*
4. Currently, how many children are served?  
Shawnee- *approximately 220 full-day (6+ hours)*

Maud -20 full-day (6+ hours)

Tecumseh- 120 full-day (6+ hours)

5. Are you able to serve all 4-year-old children in your area?

Shawnee- *Yes*

Maud- *No*

Tecumseh- *Yes*

6. Do you have a waiting list?

Shawnee- *No*

Maud- *Yes*

Tecumseh- *No*

7. What is your estimate of how many children under age 5 have siblings?

Shawnee- *Unknown*

Maud- *10*

Tecumseh- *Unknown*

8. How do you select the children who participate in your pre-K program?

Shawnee- *Online & on-site enrollment*

Maud- *On-site enrollment*

Tecumseh- *On-site enrollment*

9. Do you collaborate with other entities? If so, who?

Shawnee- *Head Start Special Education Programs.*

Maud- *Yes. Crossroads Head Start/Early Head Start Centers.*

Tecumseh- *No*

10. Does your community need more Head Start or Early Head Start slots?

Shawnee- *Unknown*

Maud- *Yes*

Tecumseh- *Unknown*

11. Are you aware of Crossroads HS/EHS?

Shawnee- *Yes*

Maud – *Yes*

Tecumseh - *Yes*

### Seminole County School Districts

1. Do you offer Pre-K? *Yes*

2. Do you plan to increase availability of your Pre-K program? *Only if there is need.*

3. Is this an increase from 2 years ago? *Yes*

4. Currently, how many children are served? *80 full-day (6+ hours)*

5. Are you able to serve all four-year-old children in your area? *No*

6. Do you have a waiting list? *Yes*

7. What is your estimate of how many children under age 5 have siblings? *Approximately 75*

8. How do you select the children who participate in your pre-K program? *On-site enrollment. First come, first serve.*

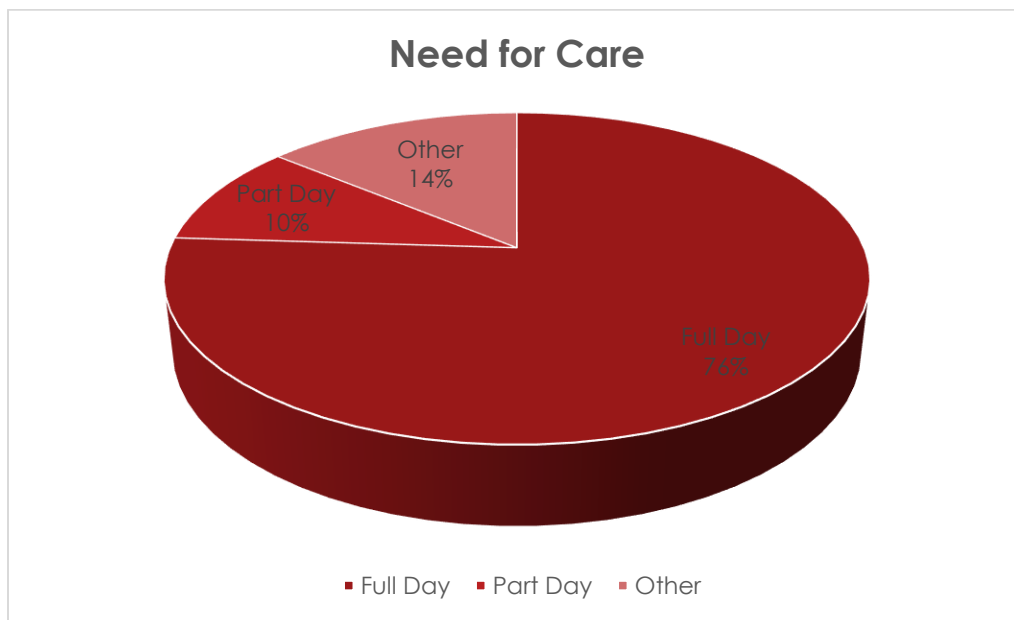
9. Do you collaborate with other entities? *No. Only if the child has special needs.*

10. Does your community need more Head Start or Early Head Start slots? *Yes*  
 11. Are you aware of Crossroads HS/EHS? *Yes*

Survey participants were asked to respond to a question concerning their need for full-day care versus part-day Head Start/Early Head Start. The need for a full-day session was indicated by 13.43% of the respondents, while a part-day session was the preference of 1.83% of those responding. The question did not apply to 82.31% of the survey respondents and 2.44% indicated “other” as an answer, with the following comments provided:

- Need a Head Start in Lexington
- Not Sure

This level of need for full-day versus part-day care was significantly increased over last year’s level.



FAMILY AND CHILD HOMELESSNESS

For the purposes of this Needs Assessment, all the McKinney-Vento liaisons in Crossroads’ service areas were asked to provide the number of children under the age of five who were reported to the Department of Education on the school district’s Homelessness Census.

The liaisons for the Shawnee, Seminole, Moore, Norman, Noble, Little Axe, Lawton, and Tecumseh Public School Districts were asked for a response. The data collected was for the 2019-2020 school year.

- Norman Public Schools- 4  
 Lexington Public Schools – 2 [*This school district was surveyed due to proximity to Norman*]  
 Moore Public Schools- (*no response*)

Lawton Public Schools- 102 (estimated number of children under 5)  
 Shawnee Public Schools- (0)  
 Noble Public Schools- None  
 Little Axe Public Schools- (no response)  
 Tecumseh Public Schools- (no response)  
 Seminole Public Schools- (no response)

Detailed, accurate information on the rate of child and family homelessness according to age and school district or geographic area in Oklahoma has been difficult to find. The following represents available data on this subject as it relates to children who potentially could be served by Head Start/Early Head Start in Crossroads’ service area:

- According to the National Alliance to End Homelessness in January 2020, the rate of unsheltered homeless families is declining (i.e., by 21% over the past five years nationally). However, the latest (2019) *Annual Homeless Assessment Report* produced for Congress by the U.S. Department of Housing and Urban Development (HUD) indicated that Oklahoma’s rate of homelessness increased by 2%.
- The HUD report noted that there were 881 unsheltered homeless families in Oklahoma in 2019, including a total of 500 children under age 18. Of the 881 families, 56% were white, 17% African American, 13% American Indian, 12% Hispanic, and 2% Pacific Islander and other.
- The following is an estimate of homelessness data as it applies to Crossroads’ service area:
  - Cleveland County – 14.3 homeless per 10,000 population (up in 2019)
  - Comanche County – 4.79 homeless per 10,000 population
  - Pottawatomie County – 4.69 homeless per 10,000 population
  - Seminole County – 4.69 homeless per 10,000 population

COMMUNITY DEMOGRAPHICS & HEAD START-ELIGIBLE CHILDREN & FAMILIES IN CROSSROADS’ SERVICE AREA

The percentage of children under age five as compared to children of all ages in Oklahoma was **27%**, and the following were the most recently-available population estimates of children under age five in Crossroads’ service area, according to the Oklahoma Policy Institute.

CHILD POPULATION UNDER AGE 5, BY COUNTY, 2017

County	Number of children under age 5	Percentage of total population
Cleveland County	15,402	5.5%
Comanche	8,563	7.0%
Pottawatomie	4,410	6.1%
Seminole	1,653	6.6%

Source: *Kids Count Data Book, Annie E. Casey Foundation, 2020*



## CHILD POPULATION BY RACE UNDER AGE 5, BY COUNTY, 2017

County	Race	Population
Cleveland	White	11,332 (72.2%)
	Black	555 (3.5%)
	American Indian	891 (5.7%)
	Asian	536 (3.4%)
	Hispanic/Latino	2,032 (13.0%)
	Two or More	2,142 (13.7%)
Comanche	White	4,960 (55.4%)
	Black	1,532 (17.1%)
	American Indian	502 (5.6%)
	Asian	95 (1.1%)
	Hispanic/Latino	1,669 (18.6%)
	Two or More	1,673 (18.7%)
Pottawatomie	White	3,045 (66.4%)
	Black	147 (3.2%)
	American Indian	958 (20.9%)
	Asian	0 (0%)
	Hispanic/Latino	457 (10%)
	Two or More	415 (9%)
Seminole	White	888 (52.9%)
	Black	100 (6%)
	American Indian	429 (25.6%)
	Hispanic/Latino	165 (9.8%)
	Asian	9 (.5%)
	Two or More	250 (14.9%)

Source: Kids Count Data Book, Annie E. Casey Foundation, 2020

In terms of Child Poverty for children under 5 in Crossroads’ four-county service area, the percentages were higher than the state average, except in Cleveland County. The following statistics show the percentage of children under age five living below the poverty level in Cleveland, Comanche, Pottawatomie, and Seminole Counties.

PERCENTAGE OF CHILDREN UNDER AGE 5 LIVING IN POVERTY  
IN CROSSROADS’ SERVICE AREA, BY COUNTY, 2017

	Total Children <5 Years of Age	Children Below Poverty Level <5 Years Old	Percentage of Children Below Poverty of Total Children <5 Years Old
Cleveland	15,402	2,680	17.4%
Comanche	8,563	2,433	28.4%
Pottawatomie	4,410	1,257	28.5%
Seminole	1,653	626	37.8%
TOTAL	30,028	6,996	

Source: Kids Count Data Book 2020, Annie E. Casey Foundation.

RATE OF CHILDREN IN POVERTY, BY RACE, IN  
CROSSROADS’ SERVICE AREA, BY COUNTY, 2012-2016

County	Race	Percent of Children in Poverty
Cleveland	Black	20.9
	American Indian	13.3
	Hispanic/Latino	15.3
	White	12.8
Comanche	Black	36.2
	American Indian	22.8
	Hispanic/Latino	23.6
	White	18.2

Pottawatomie	Black	47.4
	American Indian	30.1
	Hispanic/Latino	32.3
	White	20.5
Seminole	Black	31.1
	American Indian	33.8
	Hispanic/Latino	42.2
	White	30.7

*Source: Kids Count Data Book 2020, Annie E. Casey Foundation.*

CHILDREN UNDER FIVE IN FOSTER CARE, BY AGE  
IN CROSSROADS' SERVICE AREA, BY COUNTY, FY 2019

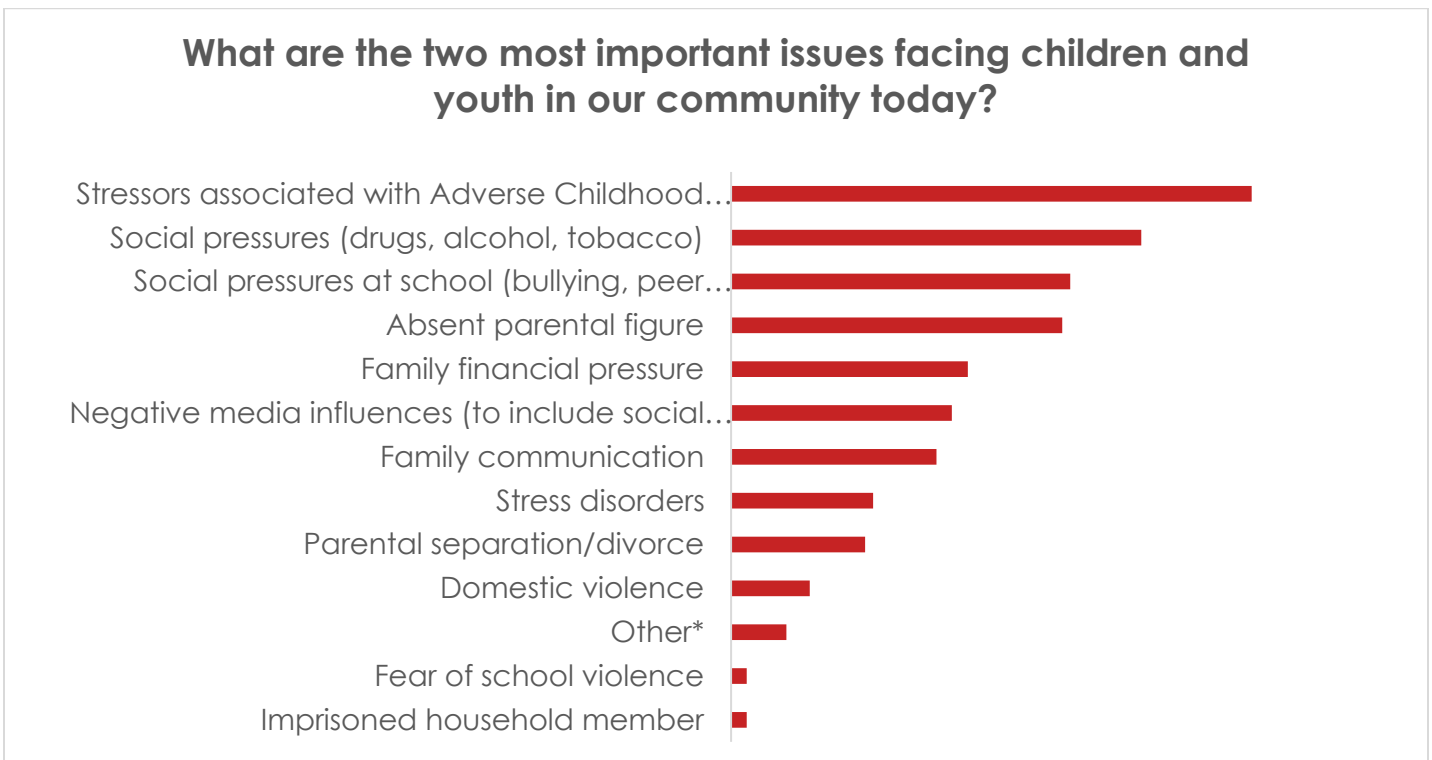
County	Age Grouping	Number of Children in Foster Placement
Cleveland	Under age 1	34
	Ages 1-2	82
	Ages 3-4	55
	Total	171
Comanche	Under age 1	35
	Ages 1-2	66
	Ages 3-4	43
	Total	144
Pottawatomie	Under age 1	25
	Ages 1-2	52
	Ages 3-4	41
	Total	118

Seminole	Under age 1	15
	Ages 1-2	20
	Ages 3-4	14 [n/a for services by Crossroads]
	Total	35 [for Crossroads' current services]

NEEDS OF CHILDREN AND FAMILIES IN CROSSROADS' SERVICE AREA

In order to determine the opinions of knowledgeable stakeholders in regard to the needs of children and families in Crossroads' four-county service area, we sent out both a Survey Monkey questionnaire and a paper-and-pencil questionnaire.

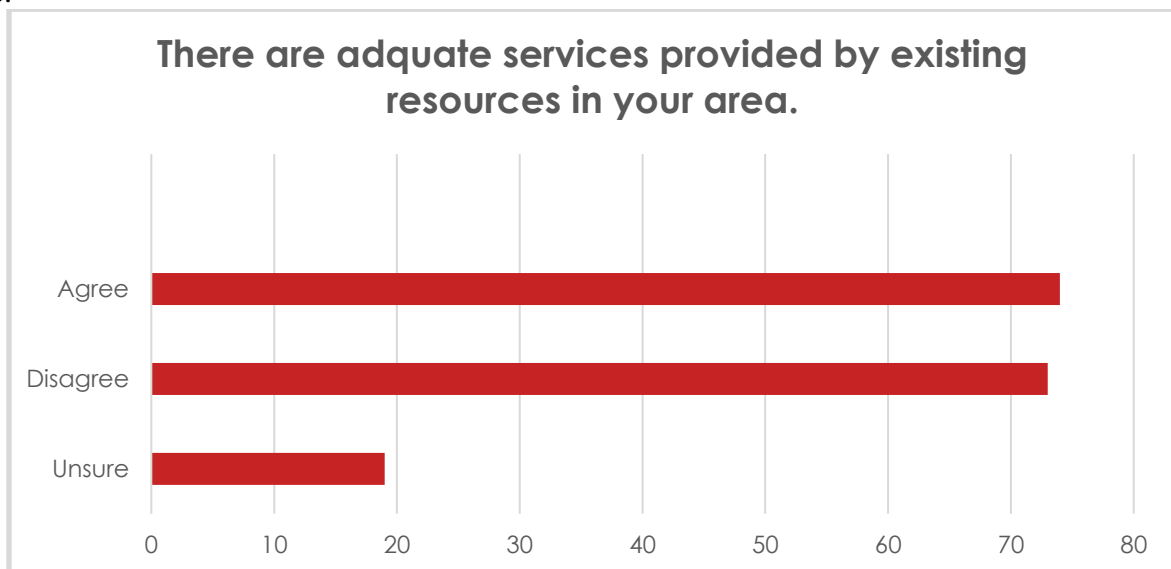
Survey participants were asked a forced-choice question regarding their opinion of the “two most important issues facing children and youth in [their] community today.” The items “Stressors Associated with Adverse Childhood Experiences” and “Social Pressures (drugs, alcohol, tobacco, etc.)” were the most frequently chosen, at 19.24% and 15.16% of the responses, respectively. “Social Pressures at School (bullying, peer pressure, academics)” and “Absent Parental Figure” were also highly rated responses, at 12.53% and 12.24% of the total, respectively.



Issue	% answer to total answers
Stressors associated with Adverse Childhood Experiences	19.24
Social pressures (drugs, alcohol, tobacco)	15.16
Social pressures at school (bullying, peer pressure, academics)	12.54
Absent parental figure	12.24
Family financial pressure	8.75
Negative media influences (to include social media)	8.16
Family communication	7.59
Stress disorders	5.25
Parental separation/divorce	4.96
Domestic violence	2.91
Other*	2.04
Fear of school violence	.58
Imprisoned household member	.58

\*Other answers: Parental drug abuse; trauma and the follow-up stresses associated with it; bullying and homelessness; problem parents raising problem children; young parents (high school students are parents); anxiety due to school bomb threats and guns; and lack of appropriate interaction between parents and children (i.e., excessive screen time).

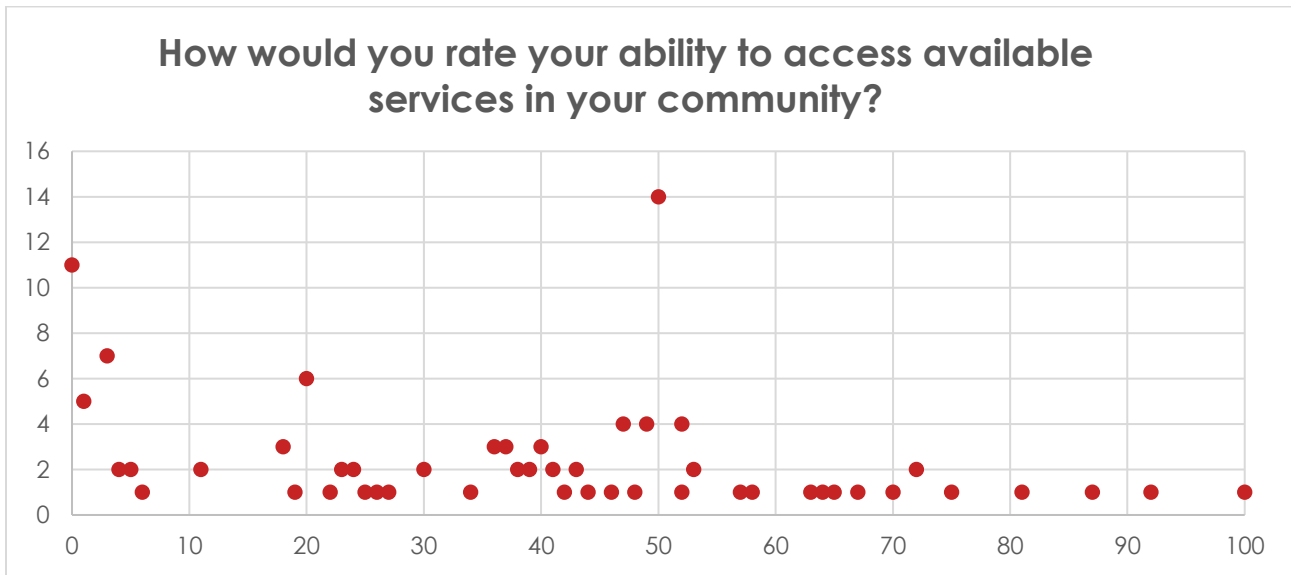
Survey respondents were also asked to respond to the statement “There are adequate service provided by existing resources in your area.” Of the 167 respondents, 75 (45%) agreed, 73 (44%) disagreed, and 19 (11%) were unsure.



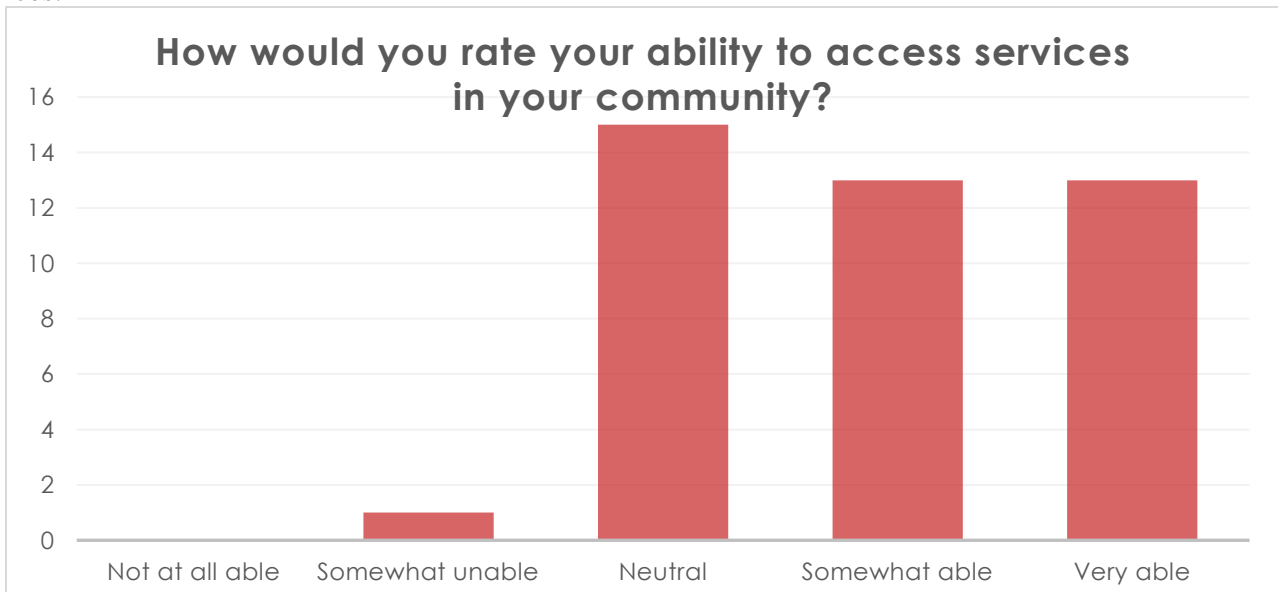
Those who indicated they were unsure were given the opportunity to elaborate on their answers. Those comments included the following:

- I think there are adequate resources for the most part, but inadequate when it comes to teens, particularly those with behavior issues which do not yet rise to the level of JSU or court involvement. DHS doesn't have access to adequate resources for those children and neither do their families.
- Just don't know everything that is available
- Not sure there is ever enough
- I am unaware of all the resources available
- There can always be more resources and some places only take certain insurances
- I think there are resources, just not as adequate as need be in reaching people
- I am not aware of any such services
- Something I would need to look into more
- Know of only a few resources
- I'm still learning what resources are available.
- Need more information on low-cost mental health services, and medical services in our community

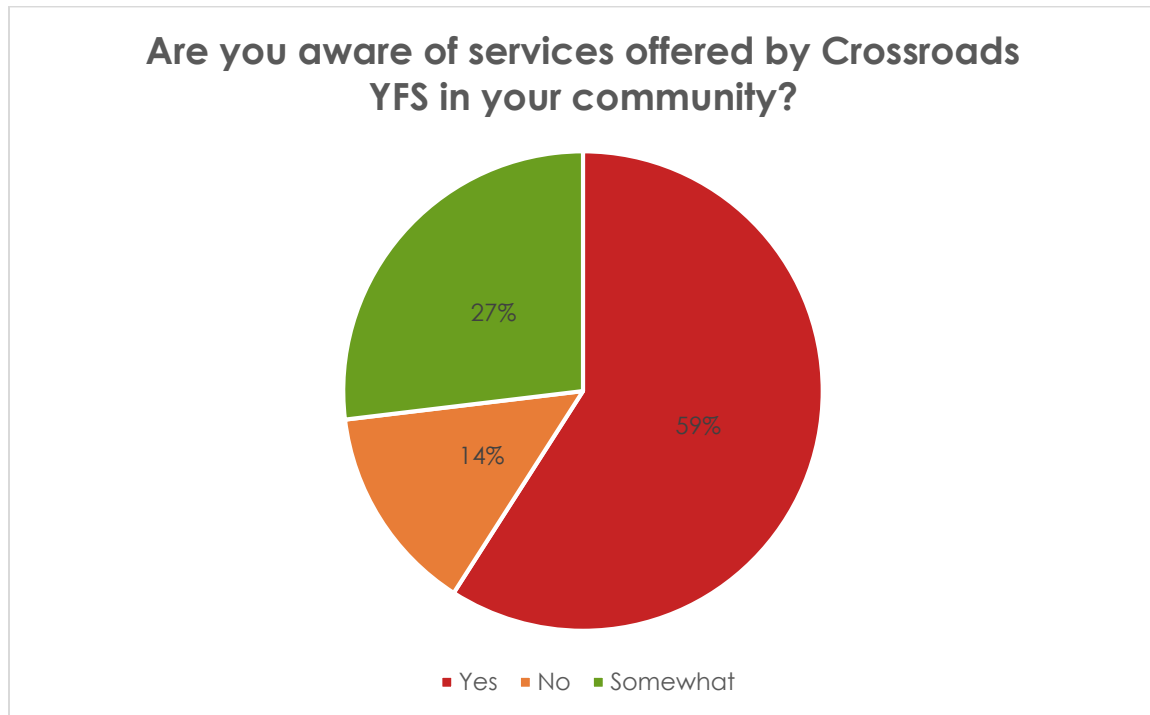
Those participating in the survey were asked how they would rate their ability to access the available services in their community. Of the 124 people responding to the online survey and using a scale from 0 to 100, the average answer was 32. The chart below shows the distribution of responses.



Those using a hard-copy questionnaire were asked to respond to the question regarding their ability to access available resources by using a scale from 1-5, with 1 being “not at all” and 5 being “very able.” Thirteen people (31%) responded that they were very able to access available resources, and another 13 (31%) indicated they were somewhat able to do so. The “neutral” response was provided by 15 (38%) respondents, and one person indicated he or she was somewhat unable to do so. No one indicated they were not at all able to access resources.



Participants were asked to indicate whether they were aware of the services offered by Crossroads YFS in their communities. The majority, 101 or 59%, indicated they were, 24 or 14% said they were not, and 46 or 27% said they were somewhat aware of the services that Crossroads YFS has to offer in their community.



Finally, participants were asked for feedback concerning their suggestions for improving services offered by Crossroads Youth and Family Services.

#### Head Start/Early Head Start Survey Respondents

##### Parent (HS/EHS)

None that I can think of. Heather is amazing and always available when we need her.

##### Parent (other)

The school we had our 6-year-old in did not immediately recommend counseling resources until almost the end of the school year. Could Crossroads proactively reach out to schools and parents?

##### Other HS/EHS Personnel

Counselors that will stay with the task and be available for questions.

None.

##### HS/EHS Teacher

More people need to know about the program.

St. Stephens needs to offer an extended day program until 4:30pm or 5:00pm for parents that work or go to school, and CSBI should extend their HS program to 2:20pm so parents do not have to pay so much for an extended-day program.

I think that we need more services for teachers [dealing with] trauma, because so many children have experienced trauma and teachers are not necessarily equipped to deal with issues that arise because of it.

Counselors that maintained a stable and consistent schedule for children in counseling and services for parents.

Mental health training for staff.



Teachers should have a list of all services offered by Crossroads YFS in their classroom (for services offered in our area by CYFS).

More one-on-one check in's from Family Advocate. Also, mandatory parent meetings.  
Maybe have a questionnaire form to ask parents what issues they have in their homes.

### **Youth Services Survey Respondents**

#### **Youth Services Staff**

Three staff per shift in the shelter would give our youth a more one-on-one experience, which most of them need.

Make information more readily available to more people.

Expand programs for all of the issues in question #3 [the two most important issues] and promote more in the community. I don't think enough people know what they have access to.

Offer child care for employees, whether they meet government criteria or not.

Grants to expand services/providers.

Make it more known what Crossroads really offers. Parents at Head Start don't know about the counseling services, etc.

#### **Social Service Provider**

Advertisement free-for what CYFS offers on TV and Radio.

Assess the community and design programs and services based on needs. Promote services through social media, social service agencies, and community coalitions.

More teachers for services after 3:00 p.m.

Better training for new employees.

Deepening relationships

#### **Youth**

Expand your shelter sites

More outings

#### **Parent (YS)**

None. Our experience has been fantastic.

#### **JSU Worker**

More drug treatment. LADC certified.

None

Groups to enhance social skills for adolescents

Wider, deeper, and more consistent services. Services directed at more early family intervention services (prior to child welfare/law enforcement)

None

#### **DHS Worker**

More training for parents to identify behavioral/emotional distress or learning disorders as the child grows older since many of the public schools do not assist with informing the parents or providing resources to them.

There is a great need in our community for parent/teen relationship services.

**Other - School Board member**

Free group counseling groups for parents and kids, part together and part separately. Accessible in schools or other convenient settings

**Other - School Board member**

More services in the schools

**School Administrator/Employee**

Strengthening relationships with school administrators and counselors

Meeting with our school staff would be a good start. Maybe listen to some of the concerns and issue we have with our students.

Send information to all school administrators and counselors about available services.

If services are available to public schools, then you need to get the word out.

Communication with schools (even elementary) as to available services

Refresher flyer at beginning of school year of services provided and then again at start of second semester

Allowing more parents who can't afford services to access them

More advertisement (i.e., newspaper, television, social media)

Meet with school administrators and counselors and inform them of offerings to our students and families.

**School Counselor**

Make an appointment to attend a counselor's monthly meeting to discuss services that you can offer to benefit the schools.

Give information to all school counselors via professional development or personal meetings via a representative.

More support groups on various topics for students and parents. If parents aren't aware or know how to handle situations, there won't be changes. Parents need to become parents again, not friends.

Advertise

**Local Government Employee**

Communication with the residential community

Work with community churches for children's activities

**Health Care Provider**

No idea what services they provide

Go to the different schools at least once a semester to inform the students what services are available.

**CrossroadsYFS - Admin./Mgmt.**

Consistent providers

Providing transportation to the youth and members of the community for things such as doctor visits, access to meals, or other services

None at this time

Have state restore funding

**Other – Secretary**

More media presence. Many people are not aware of our services.

**Other – Receptionist**

Quicker services being available, some don't even get started until mid-year. Better access to mental health services

### County Government

More marketing of available services

## DISCUSSION

The results of the 2020 Community Needs Assessment for Crossroads Youth & Family Services are similar to those from recent years.??? Local School Districts in the counties in which Crossroads provides services (Cleveland, Comanche, Pottawatomie, and Seminole) provide Pre-K classes, but there appears to be opportunities for Crossroads to collaborate with them to expand such services. School district personnel in each of the four counties appear to be aware of Crossroads YFS, but this depends somewhat on which personnel was being questioned, because counseling staff or teachers commented several times that they were unaware of the services offered by the agency.

Expressed need for full-day versus part-day care was significantly higher than last year, when it was approximately 60-40%. While not as many respondents answered this question, the percentage spread this year was 83-17% for those who answered.

In terms of Community Demographics, there has been an increase (of 2%) in the number of homeless in Oklahoma for the first time in several years. Data concerning homeless children has been sparsely reported to Crossroads YFS from local school districts, so it is unknown how many young children under the age of five (5) and their families are homeless at this time. Unsheltered and homeless families in Oklahoma was high last year.

Since 2017 data is the most recent available at the time of this writing, we are again displaying it. In 2017, there was a small decrease in the number and percentage of children under the age of five as compared to children of all ages in Oklahoma (27% in 2017 versus 28% in 2016). This is pertinent for Crossroads' service area as well. This Needs Assessment notes the following numbers in each of the four counties in which Crossroads provides Head Start, Early Head Start, or both:

Cleveland	-	15,402
Comanche	-	8,563
Pottawatomie	-	4,410
Seminole	-	1,653

The fastest growing racial category in Crossroads' service area is Hispanic/Latino, with Comanche County having the largest percentage in the four counties of residents falling into this category.

In terms of children under the age of five living in poverty, the counties in rank order of prevalence in Crossroads' service area are as follows: Seminole, Pottawatomie, Comanche, Cleveland

In terms of the expressed needs of children and families in Crossroads' service area, "Stressors Associated with Adverse Childhood Experiences" and "Social Pressures (drugs, alcohol, tobacco, etc.)" were the two most frequently identified problems affecting children and youth. "Social Pressures at School" and "Absent Parental Figure" were also highly rated responses. Interestingly, "Imprisoned Household Member" was ranked last, but research identifies it as one of the ten Adverse Childhood Experiences that can cause, in tandem with at least two others such experiences, tremendously increased risk for substance abuse, morbidity, and premature mortality. Additional training for community members and community partners on this fact would seem to be in order.

Only 45% of the Survey Respondents indicated that they believed adequate services were being provided by existing resources in their areas. In fact, a lack of knowledge about what services are being currently provided was a frequent comment. However, the clear majority of respondents indicated that they were aware or were somewhat aware of the services offered by Crossroads YFS in their communities, with only 14% saying that they were not.

The need for additional mental health/counseling services and/or training in the area of mental health was the most commonly expressed opinion in regard to improving services offered by our agency. ???

The next step in Crossroads' annual planning cycle is the Strategic Planning Retreat for our Board of Directors. With those data and the results described in this report, Crossroads' Strategic Organizational Plan can be developed.